



Global Invasive Alien Species Information Partnership

Background & WS Objectives

Invasive Alien Species

- Invasive alien species (IAS) are those alien species which threaten ecosystems, habitats or species
- Leading drivers of biodiversity loss
- Focus of Article 8(h) and Aichi Biodiversity Target 9, and numerous decisions (VI/23 – Guiding Principles)
- A lack of reliable, readily accessible information has been identified as a barrier in Parties' efforts to prevent, control, and eradicate IAS



Information Needs



- Analytical approaches to addressing IAS (e.g., risk analysis) require scientifically accurate information on such factors as:
 - Organismal id and biology
 - Potential impacts
 - Pathways of spread
 - Options for prevention, eradication, and control

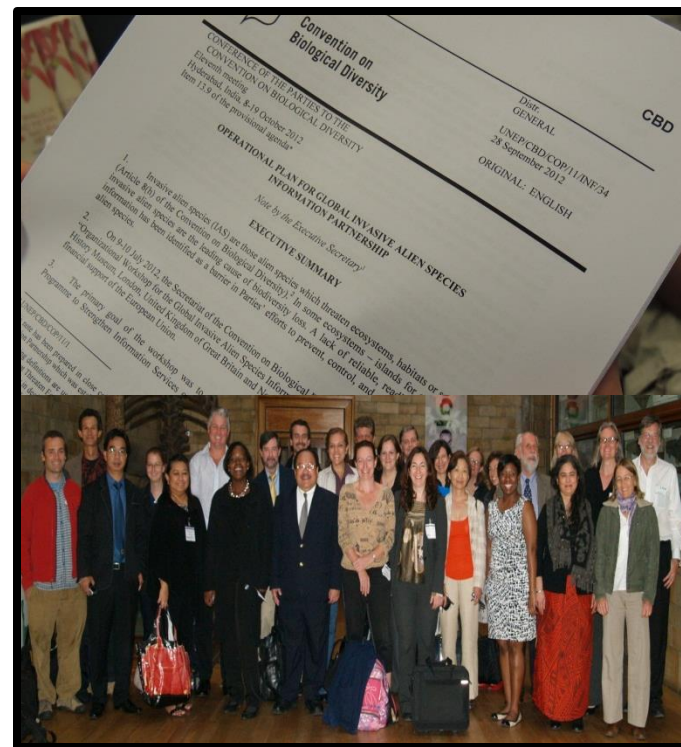
Joint Work Programme

- On Sept 5-6, 2011- in response to CBD decision X/38, GBIF convened the Informatics Expert Meeting on Invasive Alien Species in Copenhagen, Denmark.
- Result: The Joint Work Programme to Strengthen Information Services on Invasive Alien Species as a Contribution towards Aichi Biodiversity Target 9 (UNEP/CBD/SBSTTA/15/INF/14).
- In response the EU provided financial support to implement the general vision laid out in the work plan.



Operational Plan

- Recognizing that a *structure for facilitating collaboration* and implementation was needed, members of the JWP called for the development of a partnership coordinating mechanism and business plan
 - On 9-10 July 2012, the Secretariat of the Convention on Biological Diversity (CBD) convened an “Organizational Workshop for the Global Invasive Alien Species Information Partnership” at the Natural History Museum, London,
 - Result: Operational Plan
 - Memorandum of Cooperation
 - Operational Plan
- UNEP/CBD/COP/11/INF/34



Operational Plan



- Guidance on what GIASIPartnership:
 - Is (vision, mission, values)
 - Does (work plan)
 - How (structure & capacities)
 - Enabling mechanisms (funding, agreements, etc.)

Operational Plan

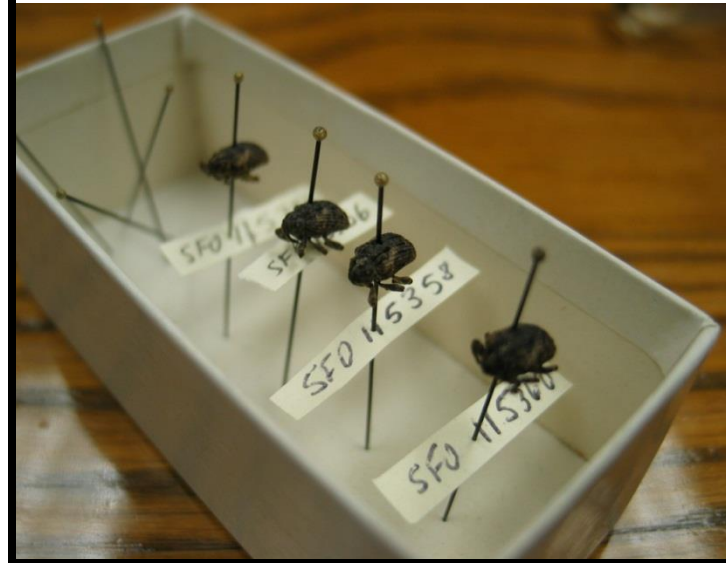


- **Mission** – Support Parties to the CBD in their efforts to prevent, control, and eradicate invasive alien species, including actions to address priority pathways, by enabling timely access to reliable information and informatics tools.
- **Values** – Global collaboration, scientific relevance, free and open access to information
- **Structure** – Steering Committee and Program Coordinator, Working Groups- strong linkages to SCBD

Operational Plan

1. Partnership Gateway
2. Database
Interoperability and
Quality Improvement
3. Information Synthesis
and Assessment
4. Taxonomic
Information Services
5. Best Practices for Non-
web-based
Information Access
and Sharing

Work Plan



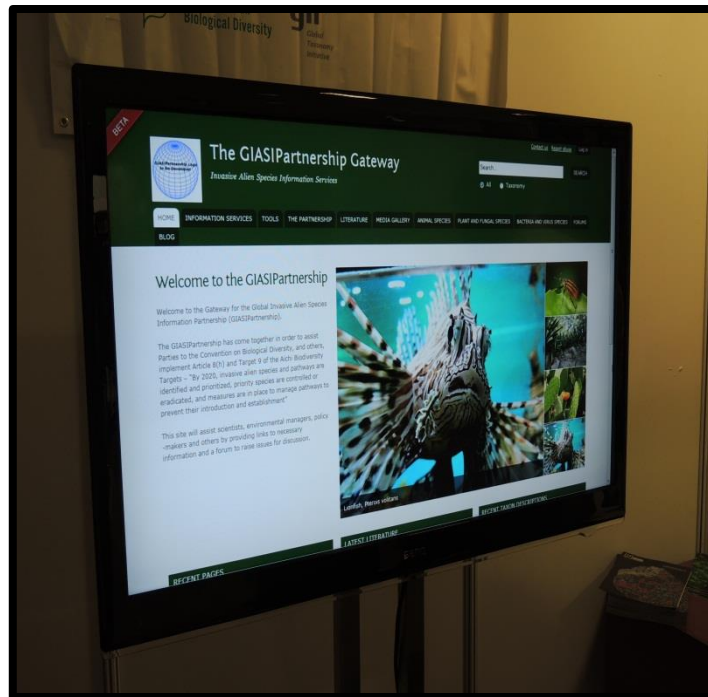
Founding Partners

- CBD
- GBIF
- IUCN; ISSG
- CABI
- Natural History Museum – London
- Paris Museum of Natural History
- FishBase
- Horus Institute
- Anatrack, Ltd



**MoC Signing Ceremony
COP 11**

Additional Roles



- Implementation
- Implementation
- Implementation
- New business model
- Networking & engagement
- Thematic info source
- Better informed decisions
- More efficient processes
- Real impact

Technical Workshop



OBJECTIVES

- Address cross-cutting tech issues
- Co-create Work Plans
 - ID 'champions'
 - ID funding opps
- Expand Partnership
- Networking
- Advance Gateway

Technical Workshop

DAY 1

- GIASIPartnership & workshop intro
- Use cases
- Cross-cutting technical issues
 - Presentations
 - Discussions
 - Gateway demo
- Individ. engagement
- IAS info demos



Technical Workshop



DAY 2

- Work Plans

AM

- Gateway
- Non-web

PM

- Interop/Quality
- Info Assess/Synth

- IAS info demos

Technical Workshop

DAY 3

- Working Group reports
- Discussion
- Work Plans
- Plenary discussion – emerging issues, opportunities, next steps
- Museum tour
- Evening event at RGS

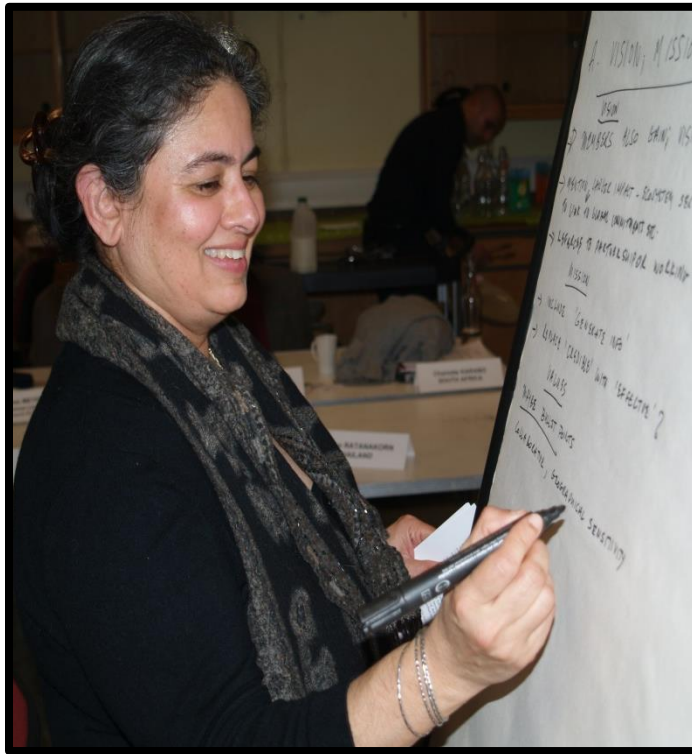


CBD Decisions/Use Cases

- Partnership to meet Parties' needs
- What are the Parties' needs?
- Reporting: NBSAPs, NISSAPs, National Reports, In-depth Review
- CBD Decisions
- IAS survey 2012
- Information provider experience
- Build it and they will come...



CBD Decisions/Use Cases



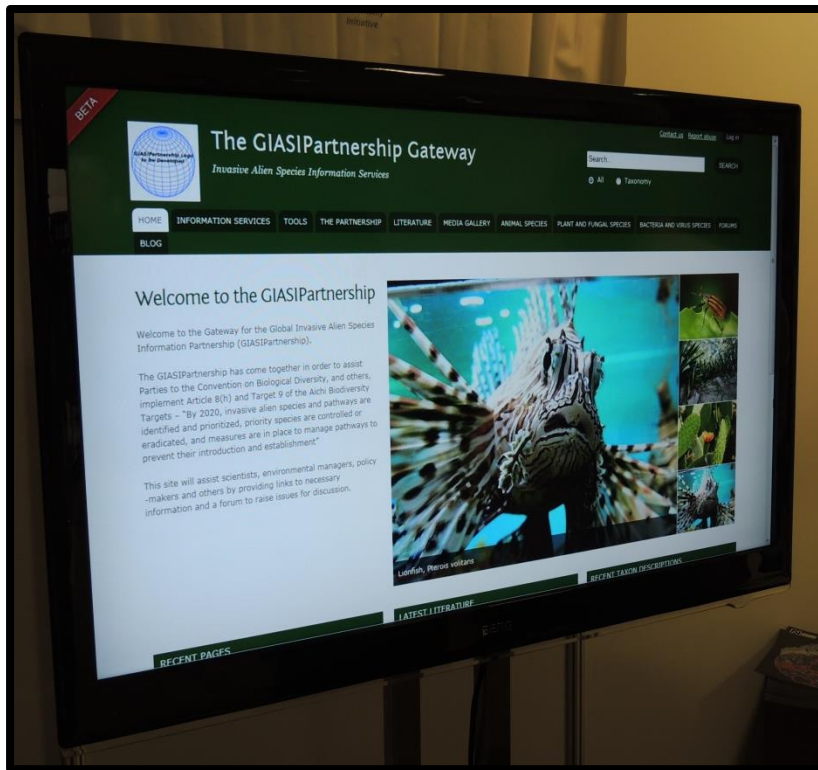
- Step into “Party shoes”
- Not necessarily experts
- How would you design info system and other resources to meet Parties’ needs – *easily and reliably?*
- Critical situation analysis
- Species-level risk assessment
- Pathways analysis

CBD Decisions/Use Cases

- What kind of info?
- What is the pattern of information gathering?
- How much?
- How accurate, reliable, timely?
- Where sourced?
- How presented?
- Gaps? (How filled?)

**FUNCTIONALITY
WORK FLOWS
ADD VALUE**





**Knowledge is power.
Information is liberating**

~ Kofi Annan